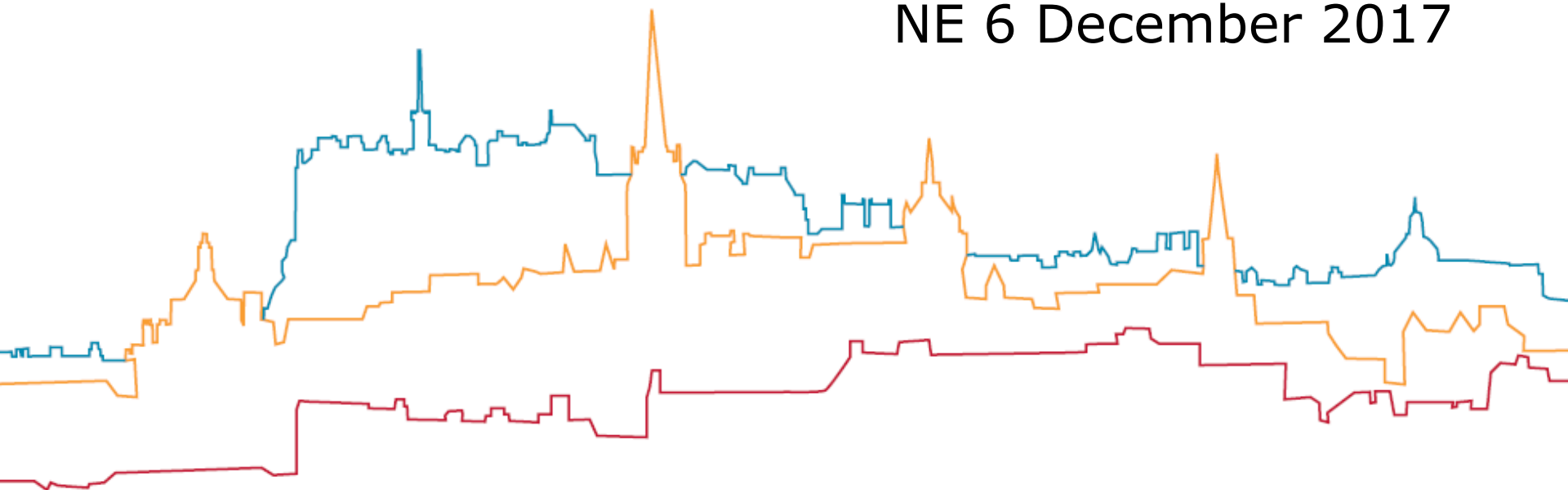


LDP Action Programme

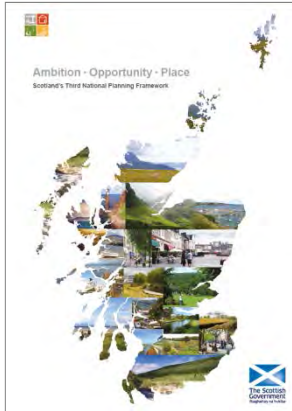
Community Councils Briefing
NE 6 December 2017



LDP Action Programme Community Council Briefing

- Context
- Action Programme (December 2016)
- Process & Roles
- Next Steps
- End (6.30pm)

Planning Policy Hierarchy



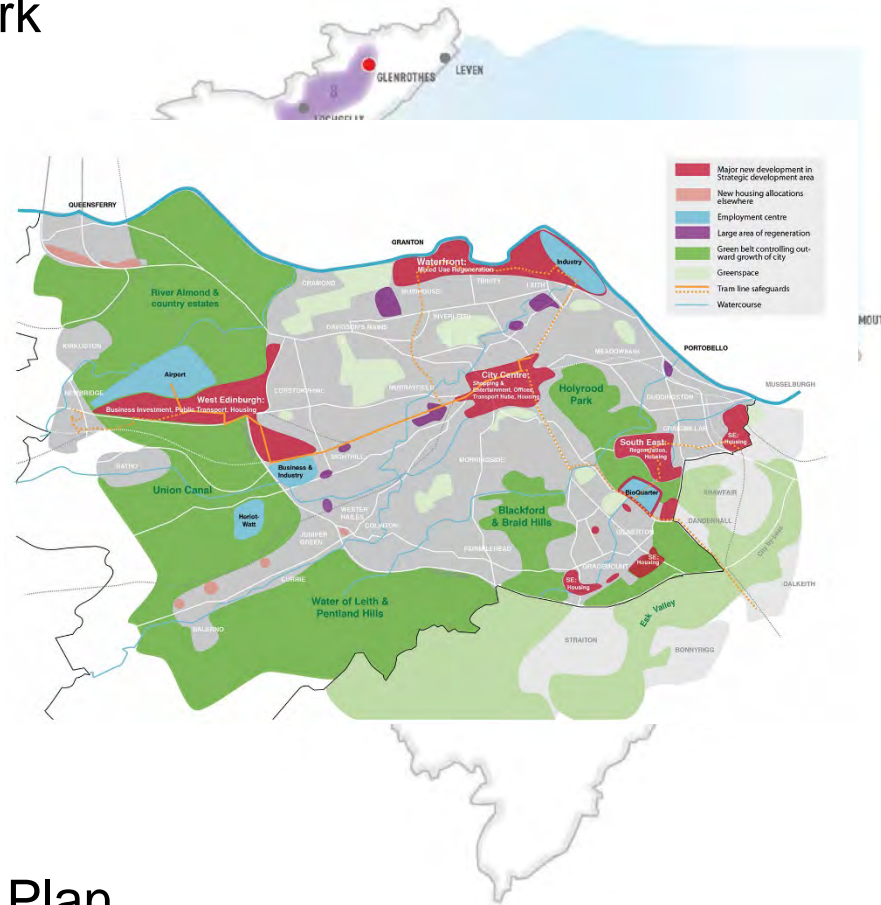
National Planning Framework
(Scottish Government)



Strategic Development Plan
(SESplan)



Local Development Plan
(City of Edinburgh Council)

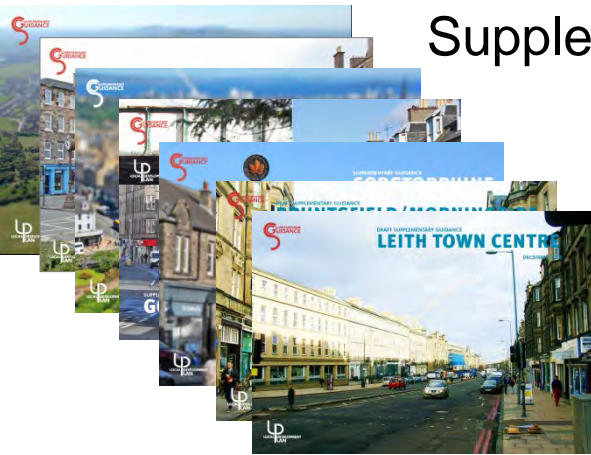


Planning Policy Hierarchy



Local Development Plan

Supplementary Guidance

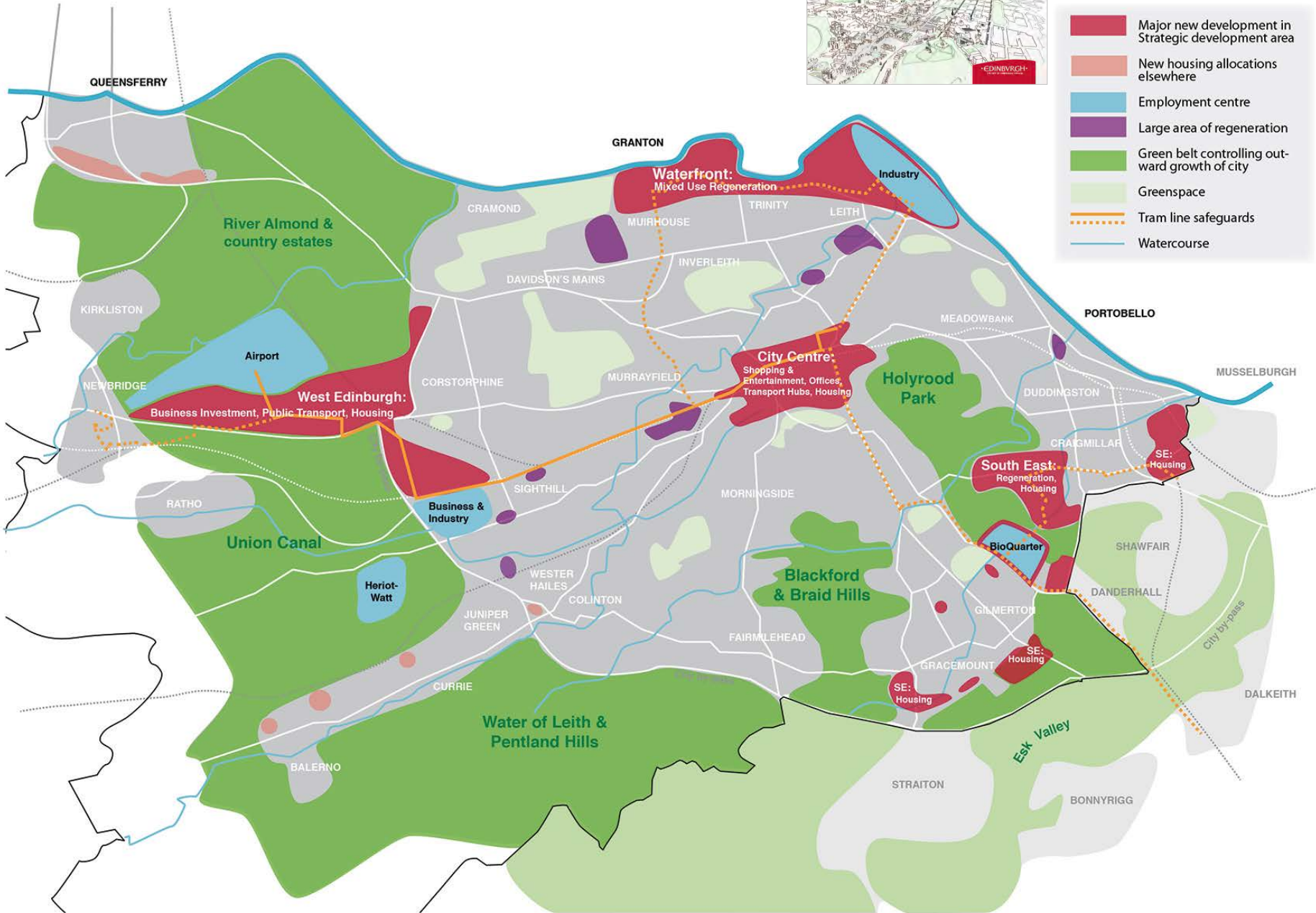


Non-Statutory Guidance



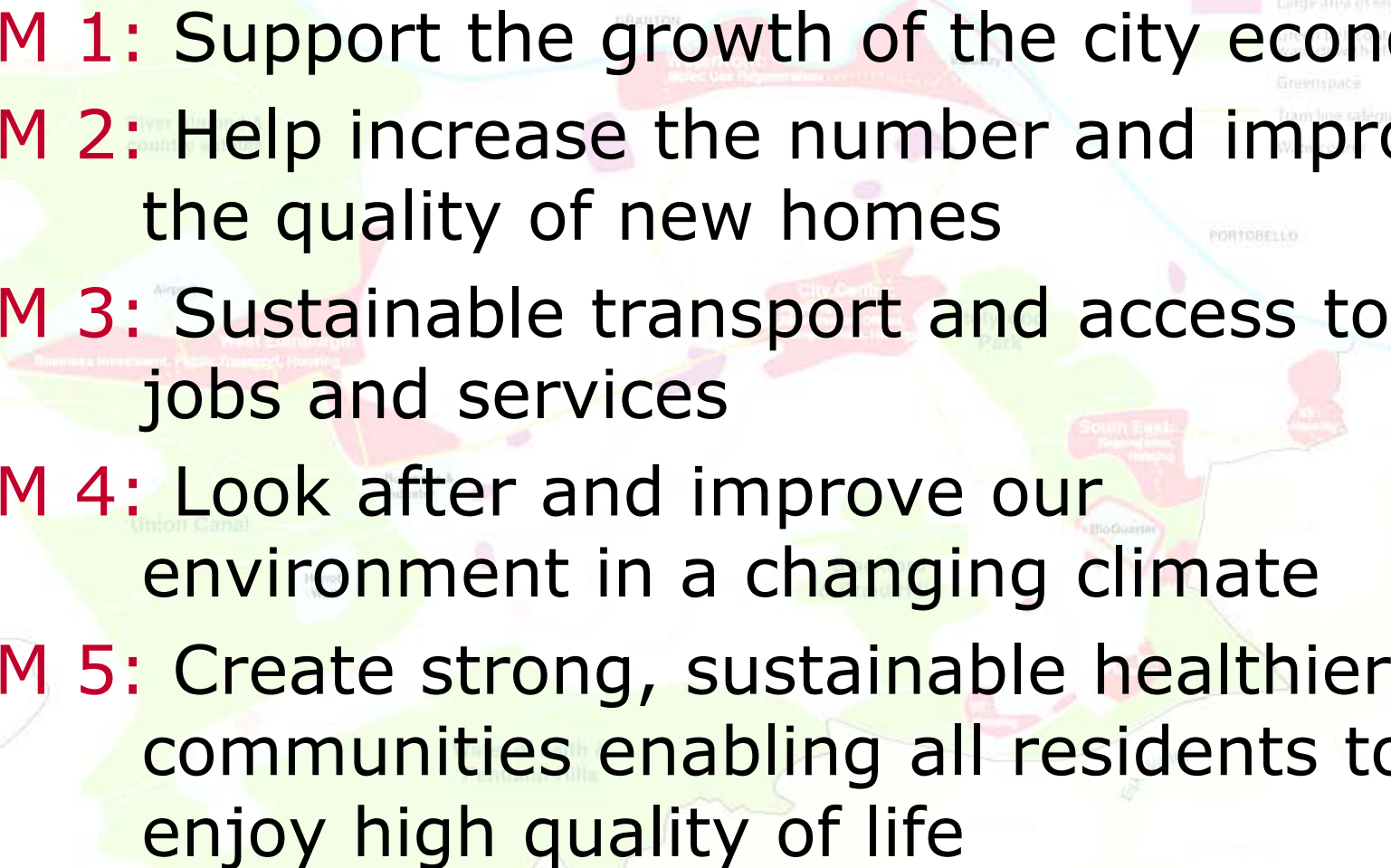
Part of the
development
plan

LDP Spatial Strategy



Aims

Infrastructure Growth

- 
- AIM 1:** Support the growth of the city economy
 - AIM 2:** Help increase the number and improve the quality of new homes
 - AIM 3:** Sustainable transport and access to jobs and services
 - AIM 4:** Look after and improve our environment in a changing climate
 - AIM 5:** Create strong, sustainable healthier communities enabling all residents to enjoy high quality of life

LDP

Stage 1

Main Issues Report

October 2011

3 months consultation

Stage 2

Proposed Plan

March 2013

Representations 6 wks)

Stage 3

Second Proposed Plan

June 2014

Stage 4

Stage 5

Examination

Stage 6

Adopted Plan

2016

Evaluation



Context

- Consultation responses:
 - Concern about growth
 - Cumulative impacts
 - Education infrastructure
 - Transport infrastructure
 - Healthcare infrastructure
 - Greenspace
- Representations:
 - Objected to new development
 - Considered in examination
 - Led to changes in LDP
- Adopted LDP has stronger policies on infrastructure

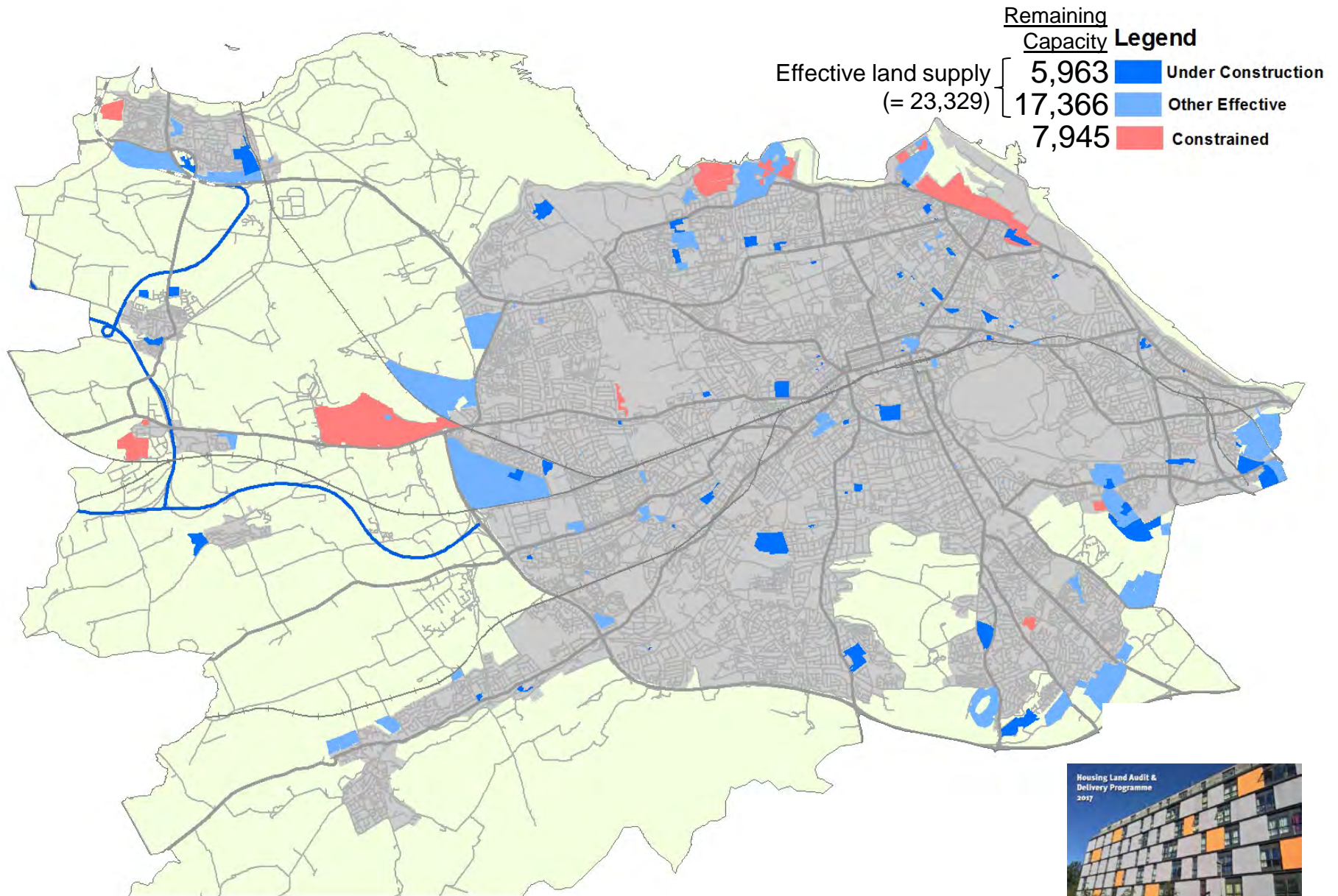


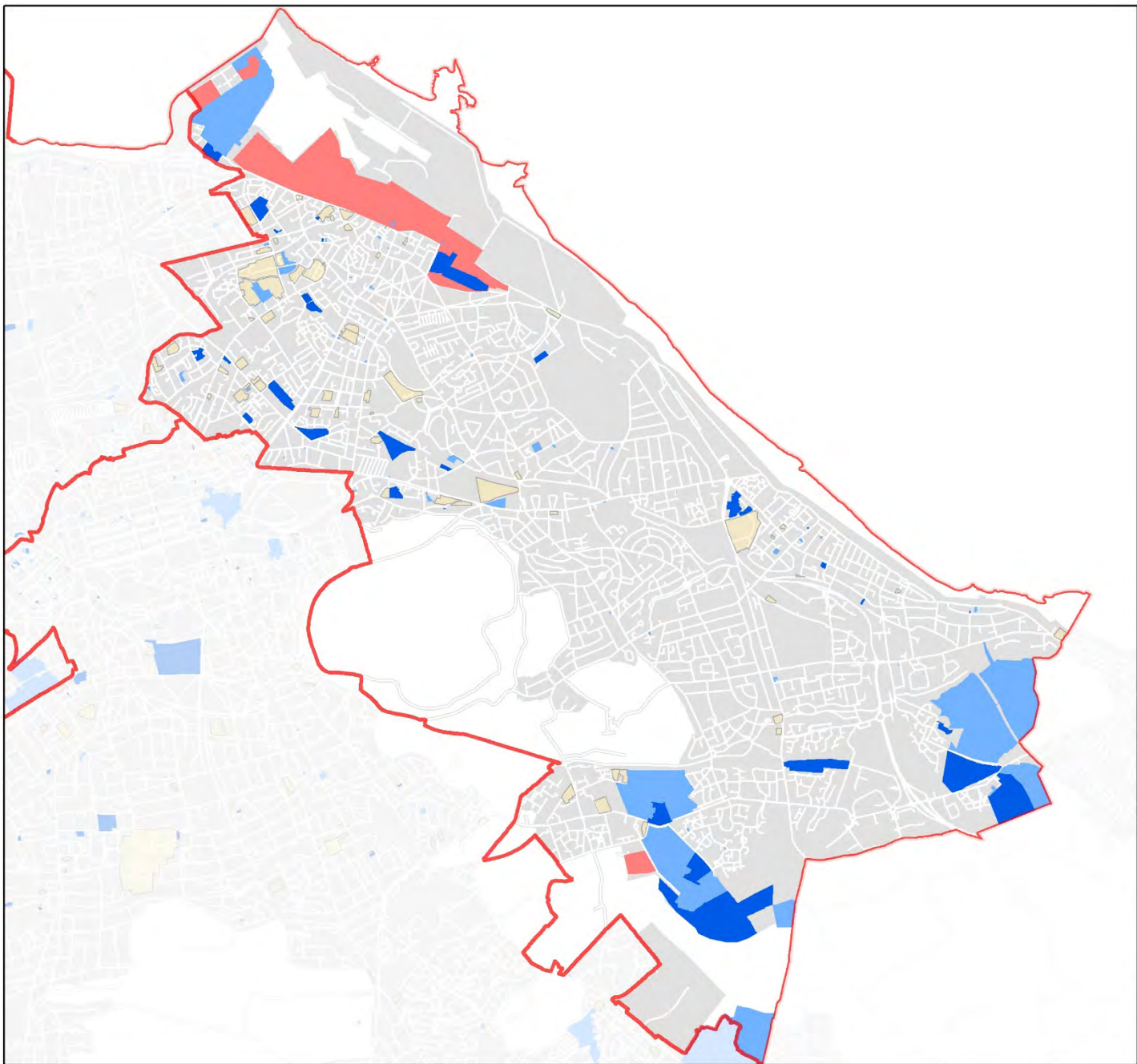
LDP Action Programme

- Cumulative impacts:
 - transport, education
 - healthcare, greenspace
 - Utilities
- Contribution Zones
- Identifies actions & costings
- Links to Supplementary Guidance
- Developer contributions will not cover all costs – funding gaps
- Update annually




Housing Land Audit & Delivery Programme 2017






Legend

3,331  Under Construction

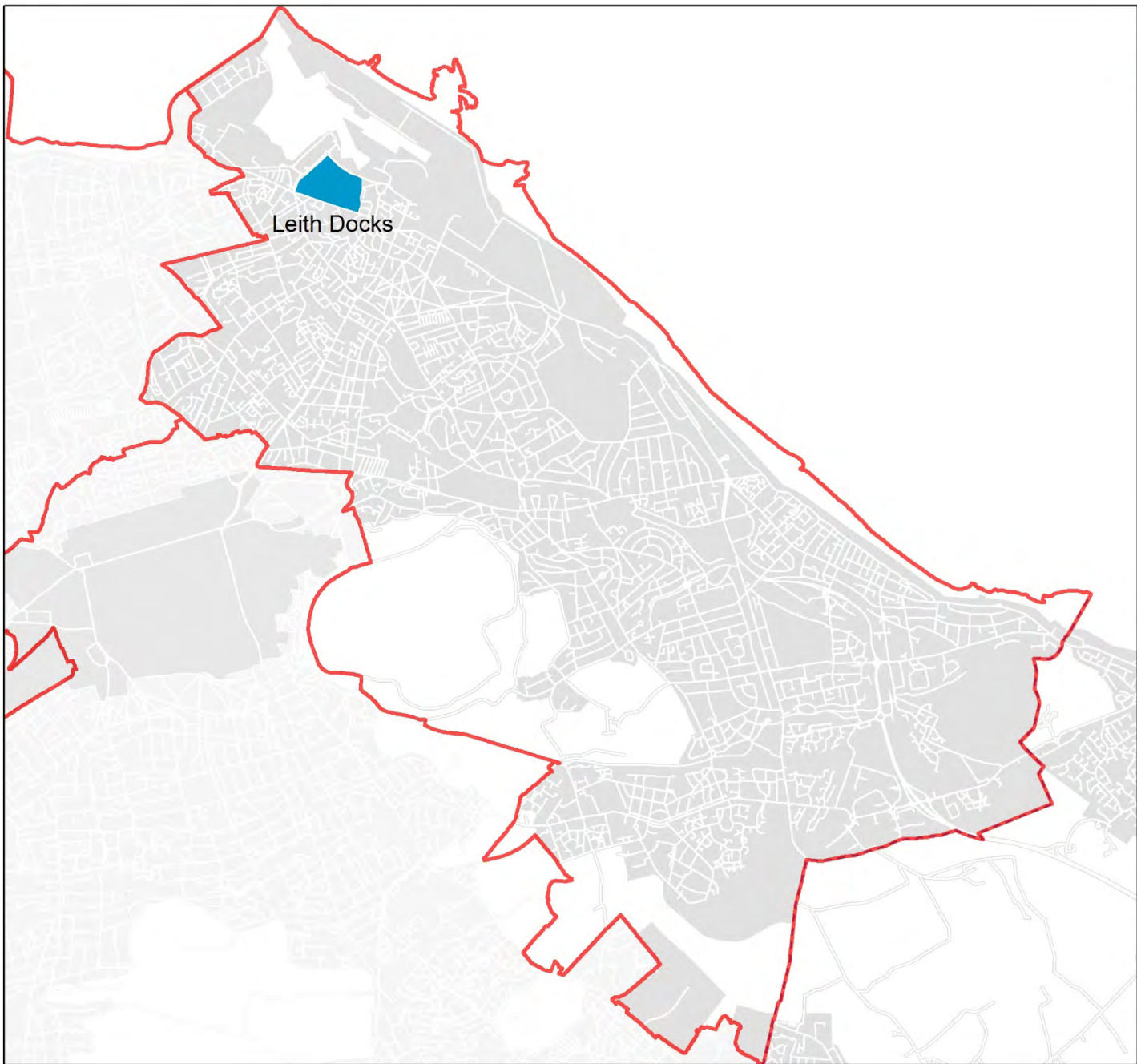
5,128  Other Effective

4,231  Constrained

12,690

 Other housing potential

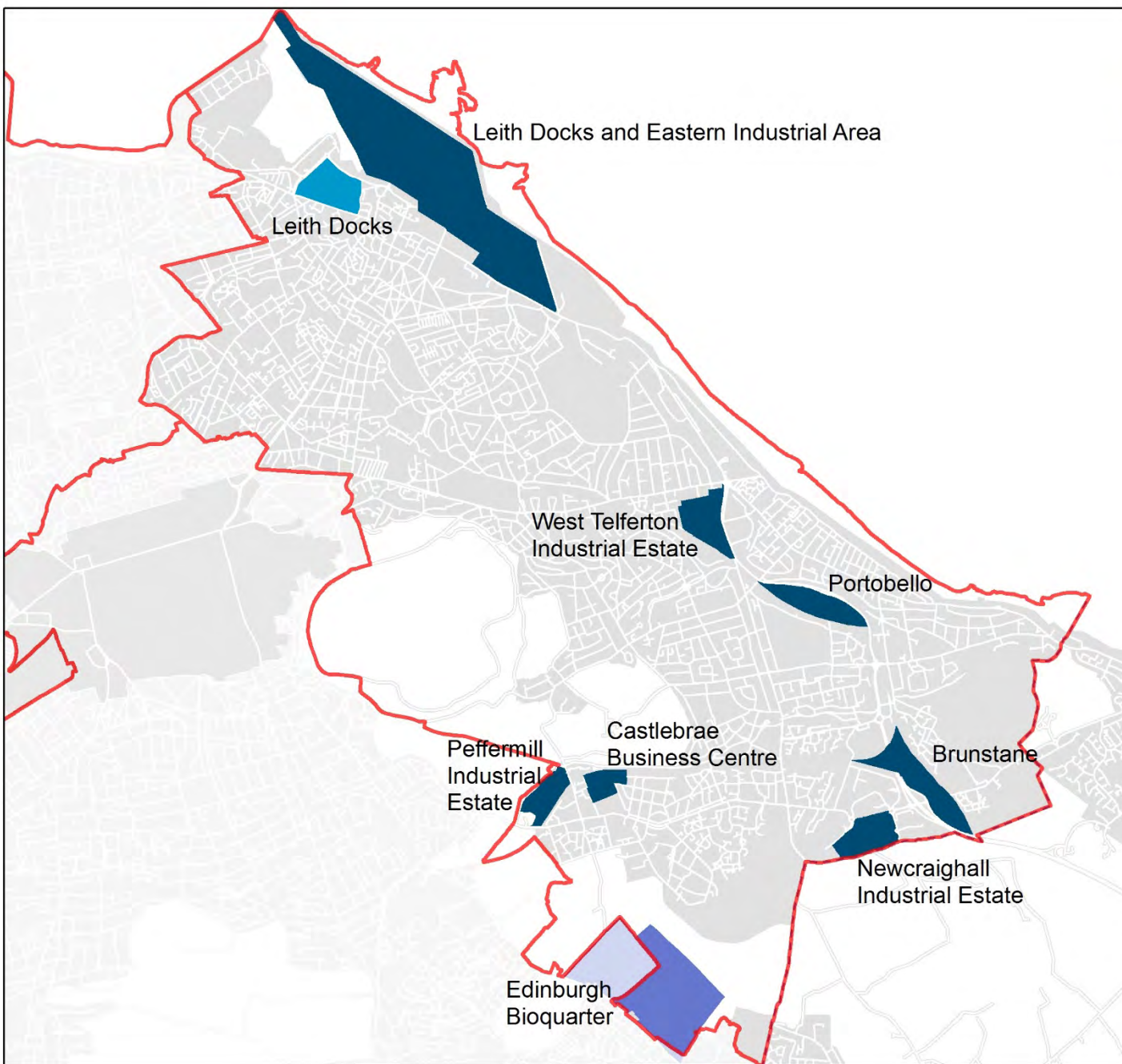
North East Locality
Housing Land Supply



Legend

 Strategic Business Centre

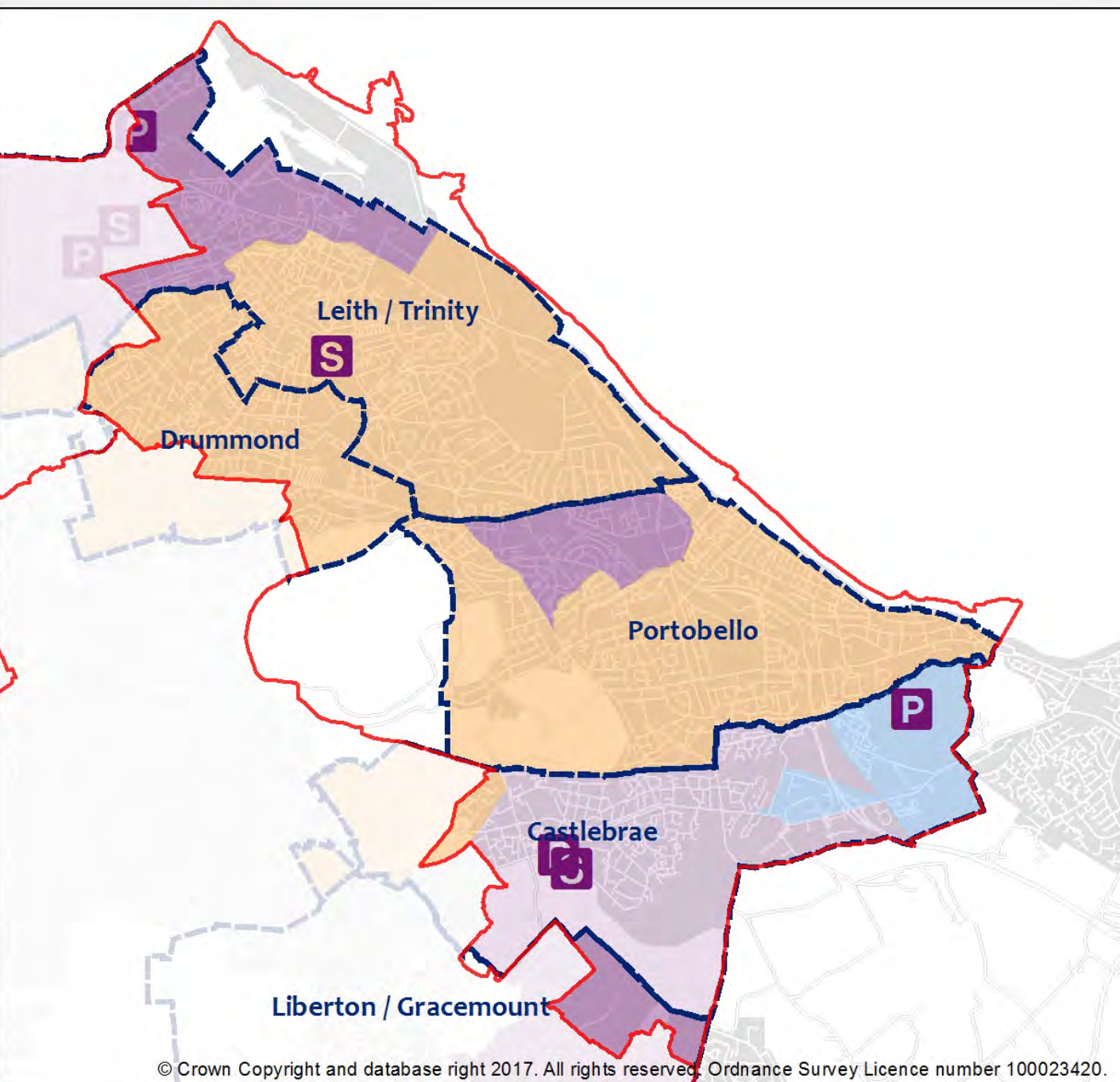
North East Locality
Economic Developme



Legend

- Strategic Business Centre
- Business and Industry Area
- Special Economic Area

North East Locality
Economic Development





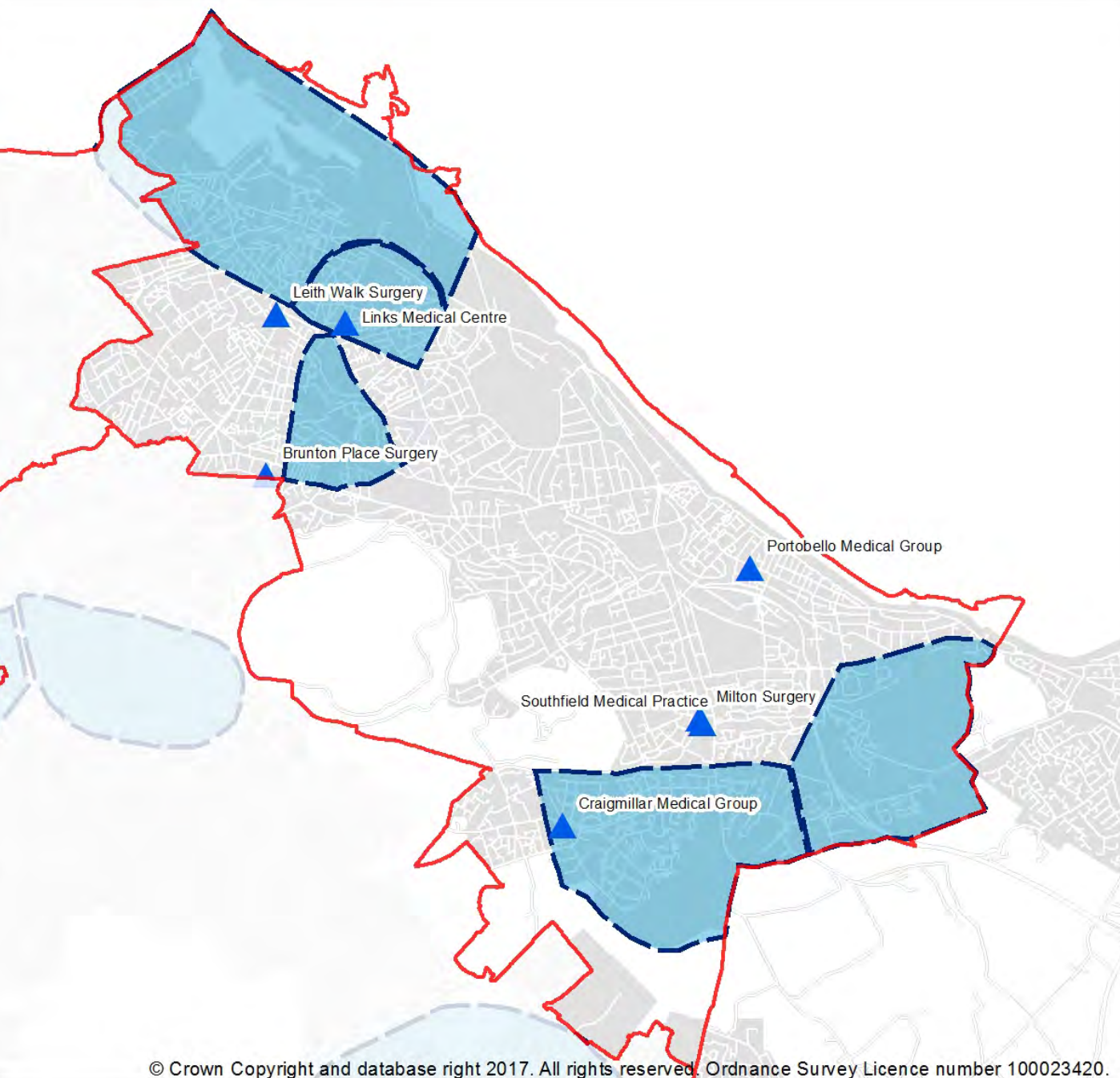
Legend

-  Education Cumulative Assessment Area
-  Primary School Actions
-  Secondary School Actions
- Contribution Zone Sub Areas
 -  Orange
 -  Purple
 -  Blue

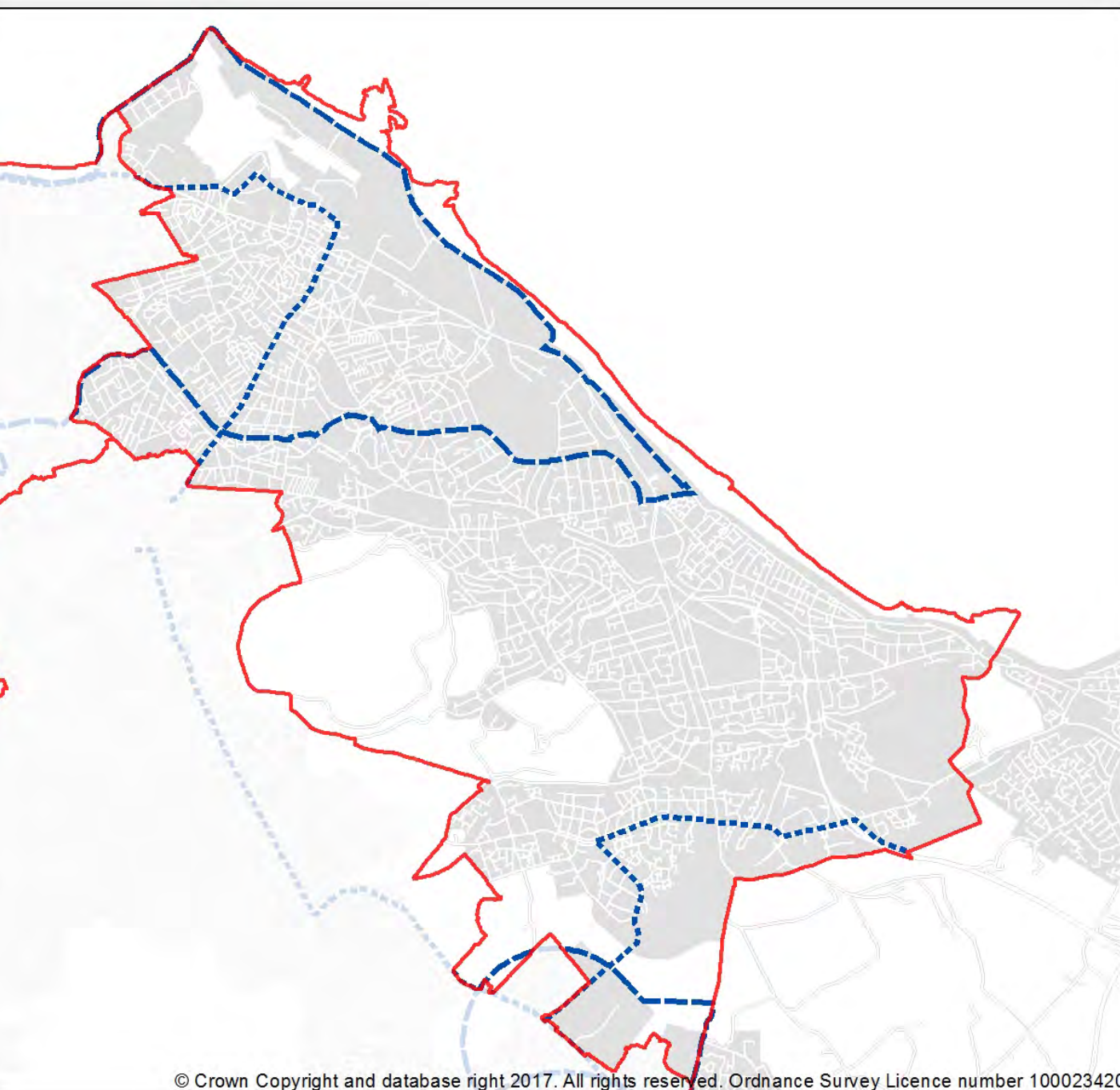
South East Locality
(2017)
Transport
Contribution Zones

Legend




-  GP Practice within HCZ
-  Health Care Zones



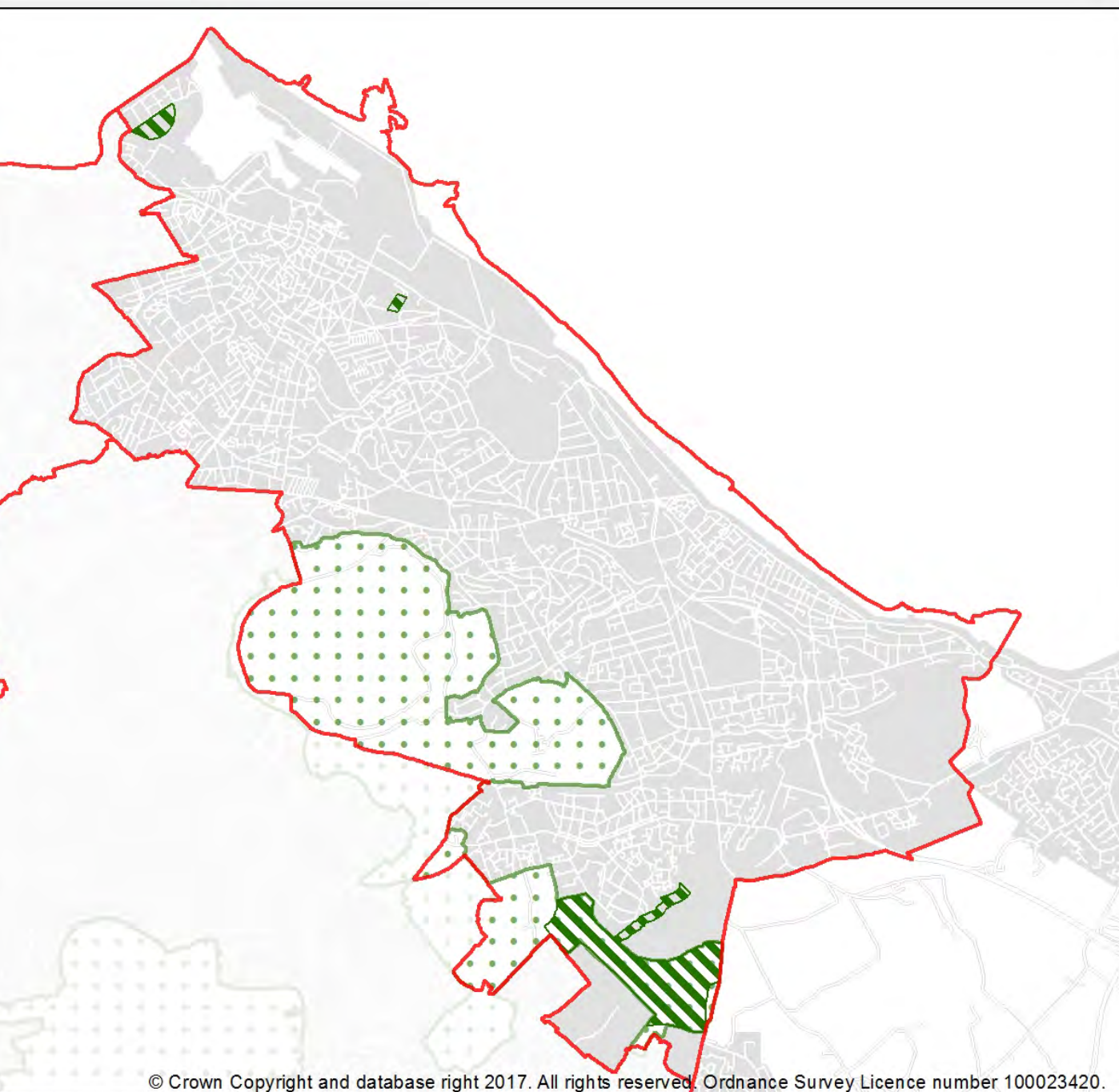
North East Locality
(2017)
Health Care
Contribution Zones



Legend

-  Transport Action
-  Transport Contribution Zone
-  Tram Route Safeguard

North East Locality
(2017)
Transport
Contribution Zones



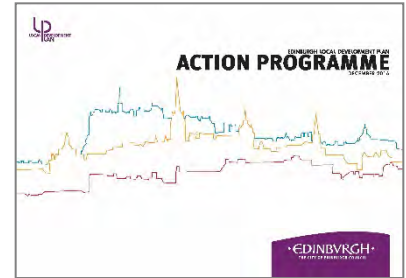
Legend

-  Green Belt
-  Greenspace Proposal
-  Linear Greenspace Proposal

North East Locality
(2017)
Green Infrastructure
Actions

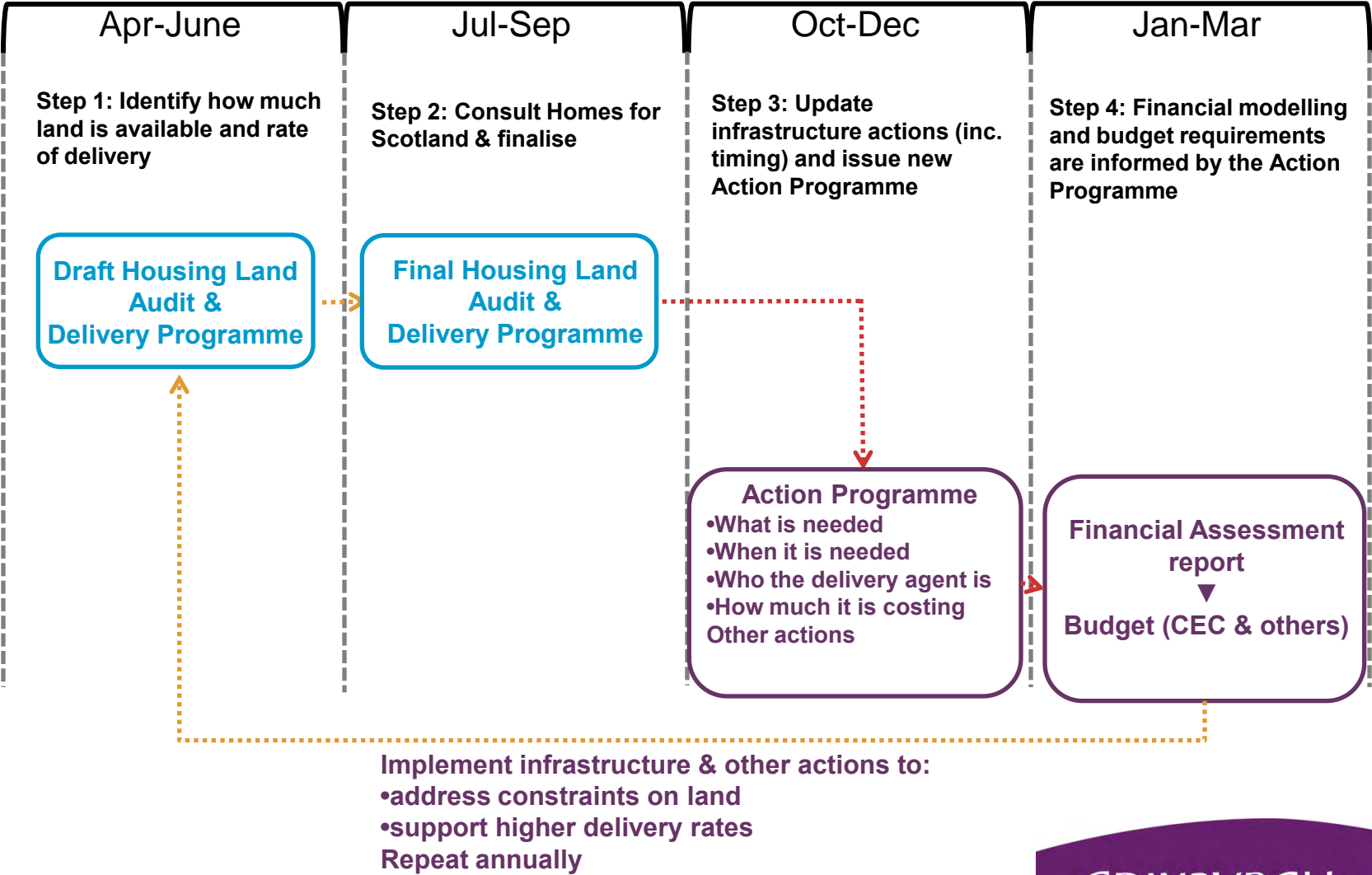
Delivering growth – risks and challenges

- Dependent on housing delivery
 - Front funding infrastructure could result in a net deficit (total or annual)
 - Ensure infrastructure is delivered in line with speed of development
- Housing audit informs Action Programme to:
 - Understand infrastructure delivery programme
 - Address constraints on land
 - Support higher delivery rates



Relationship of Housing Land Audit & Delivery Programme with Action Programme

Note: Dates relate to published documents – work will normally be finalised for internal use 2 months ahead

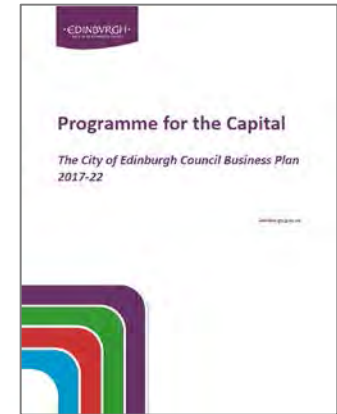


Process and Roles

- Action Programme prepared by CEC officers:
 - Input from Key Agencies, e.g. NHS
 - Officer governance – Oversight Group chaired by Chief Executive
- Action Programme reported for approval:
 - Housing & Economy Committee (18 Jan 2018)
- AP Financial Assessment reported to:
 - Finance & Resource Committee (23 Jan 2018)
- AP submitted to Scottish Ministers
- Informs applications, Supplementary Guidance updates, individual projects

Alignment of Business Plan & Spatial Plans

- Council Business Plan (Aug 2017)
- Identifies LDP alongside Community Plan (LOIP) as key strategy
- 4 Locality Improvement Plans coordination
- Regular finance reports
 - January 2018
- Individual action projects will be reported for separate decision (depending on scale & nature)



Strategic Framework



Importance of Infrastructure

- Growth needs infrastructure:
 - To ensure good places
 - To be sustainable

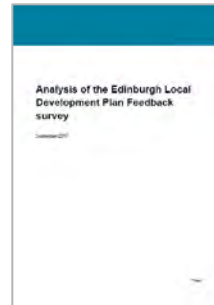
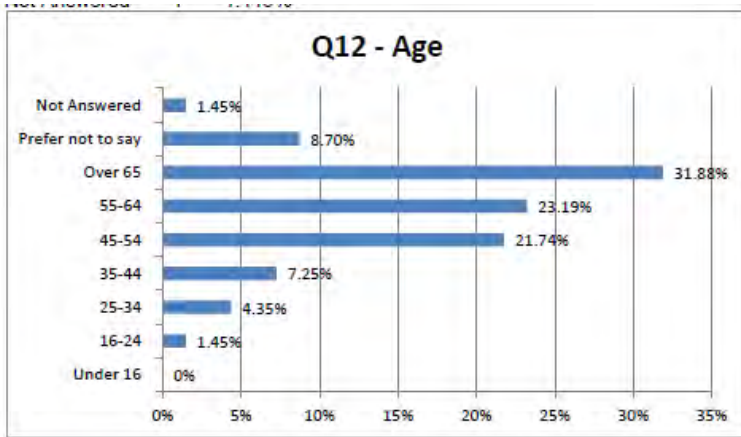
Five Strategic Aims



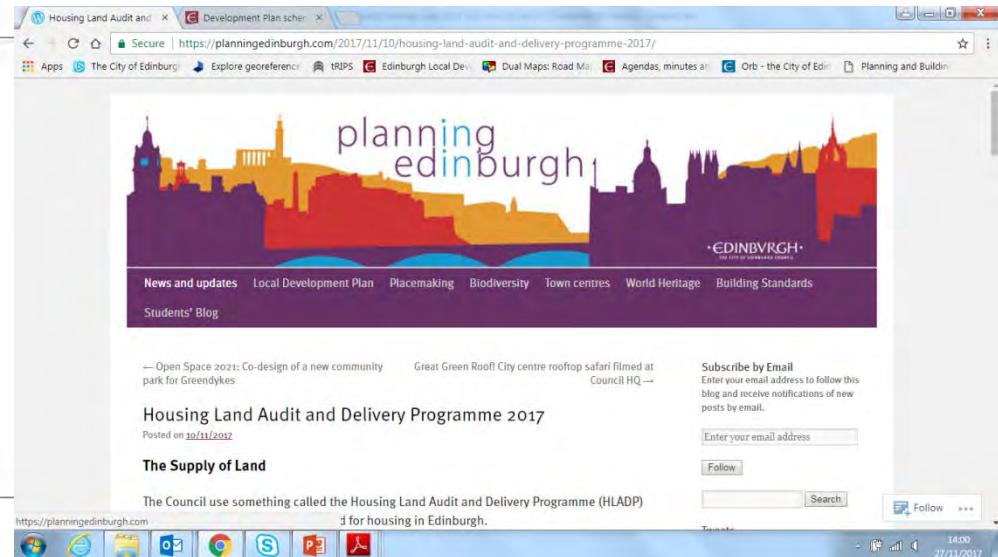
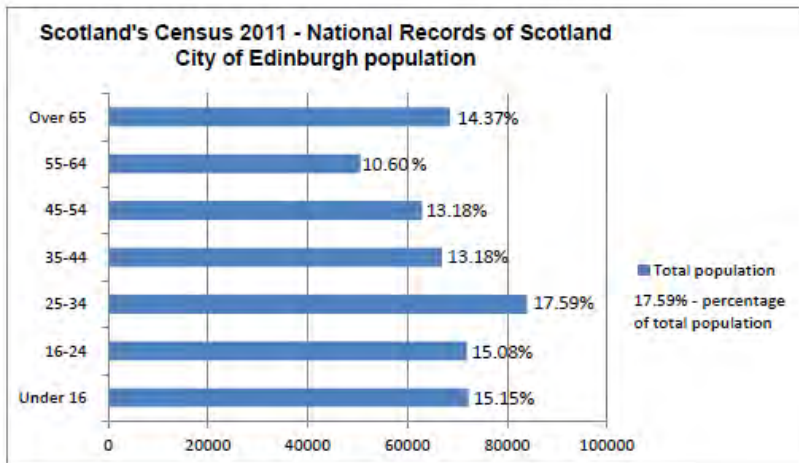
Roles for Community Councils?

- Help emphasise need for infrastructure enhancements to support growth
- Help spread awareness of LDP Action Programme
- Help facilitate engagement with communities as:
 - LDP and Action Programme are implemented
 - LDP 2 is prepared
- How can we build community capacity to engage in LDP 2?

Engagement in Action Programme & LDP 2



In comparison, the census data for 2011 shows the City of Edinburgh population recorded below.



Next Steps

- 4 community briefings (Nov/Dec 2017)
- New Action Programme –
 - report January 2018
- Potentially update Supplementary Guidance on contributions and infrastructure – 2018
- Further community briefings?
- SDP 2 –
 - examination ends early 2018
 - Approval by Scottish Ministers May 2018?
- LDP 2 – Main Issues Report consultation: Autumn 2018?

Thank You

Twitter: @planningedin

Instagram: planningedinburgh

Blog: planningedinburgh.com

www.edinburgh.gov.uk/localdevelopmentplan

