

Edinburgh Local Development Plan



Community Groups Briefing

Leith area

27 February 2014

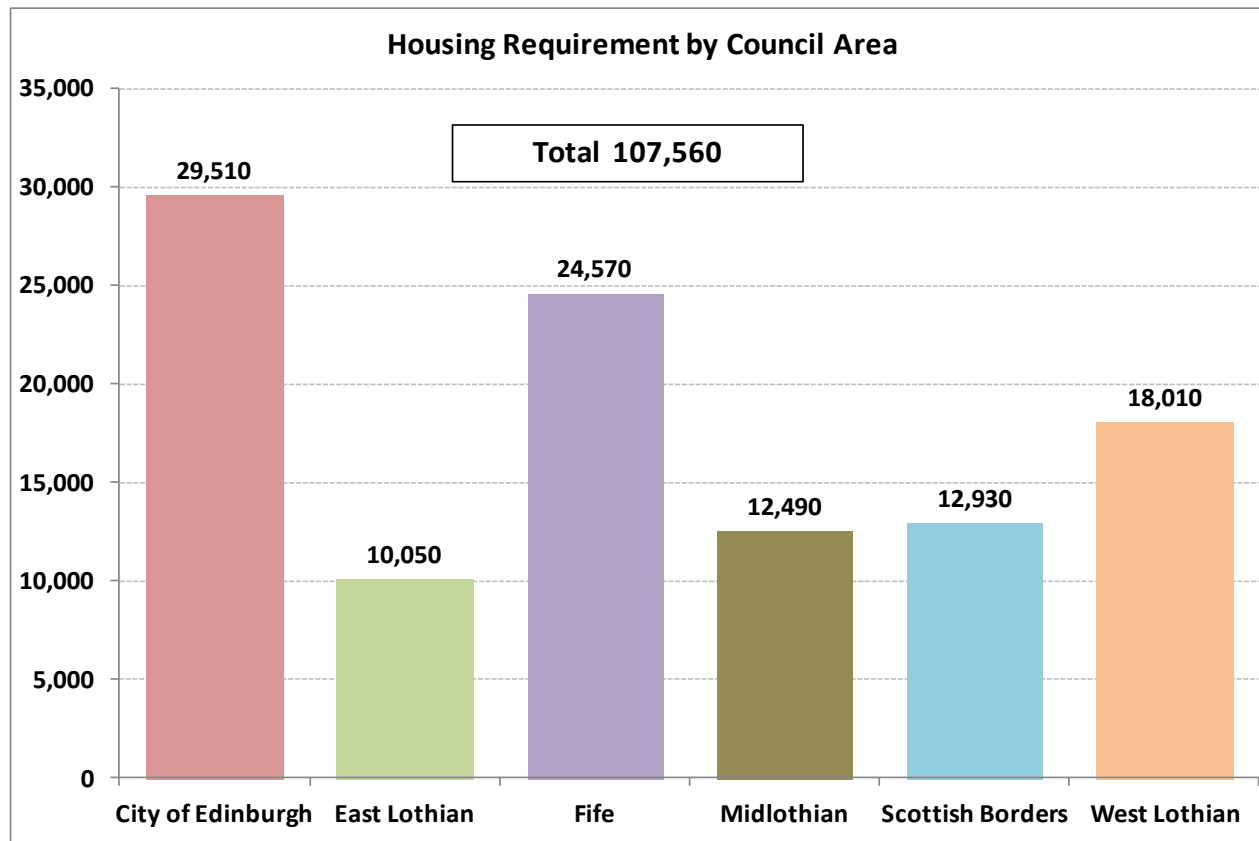
Content

- Edinburgh's Housing Requirement
- Other Matters raised in Representations
- Next Stage in Local Development Plan process
- Assisting Community Councils

Setting the Housing Requirement

- Set through Strategic Development Plan
- Sites identified in Local Development Plan
- In June 2013, Scottish Ministers increased the housing requirement for Edinburgh and South East Scotland
- Supplementary guidance to set requirement by Local Authority area
- More housing land needed by 2024

Strategic Development Plan Supplementary Guidance



What Supplementary Guidance means for Edinburgh

| | |
|---------------------------------|---------------|
| TOTAL | 29,510 |
| Existing Sites and Windfall etc | 21,810 |
| Additional Land needed | 7,700 |
| West and South East Edinburgh | 5,200 |
| Elsewhere in CEC area | 2,500 |

Note - Components of **TOTAL** are indicative only. Will be set in a revised LDP
- SESplan expected to approve Final SG on 10 March.

Implications for Local Development Plan (LDP)

- Proposed LDP includes additional land for 4200 houses – now need around **7,700**
- Need to prepare a Revised LDP (**target 15 May 2014**)
- Must be consistent with Strategic Development Plan (and Supp Guidance) and have regard to Proposed Plan representations

Preparing the Revised Local Development Plan (LDP)

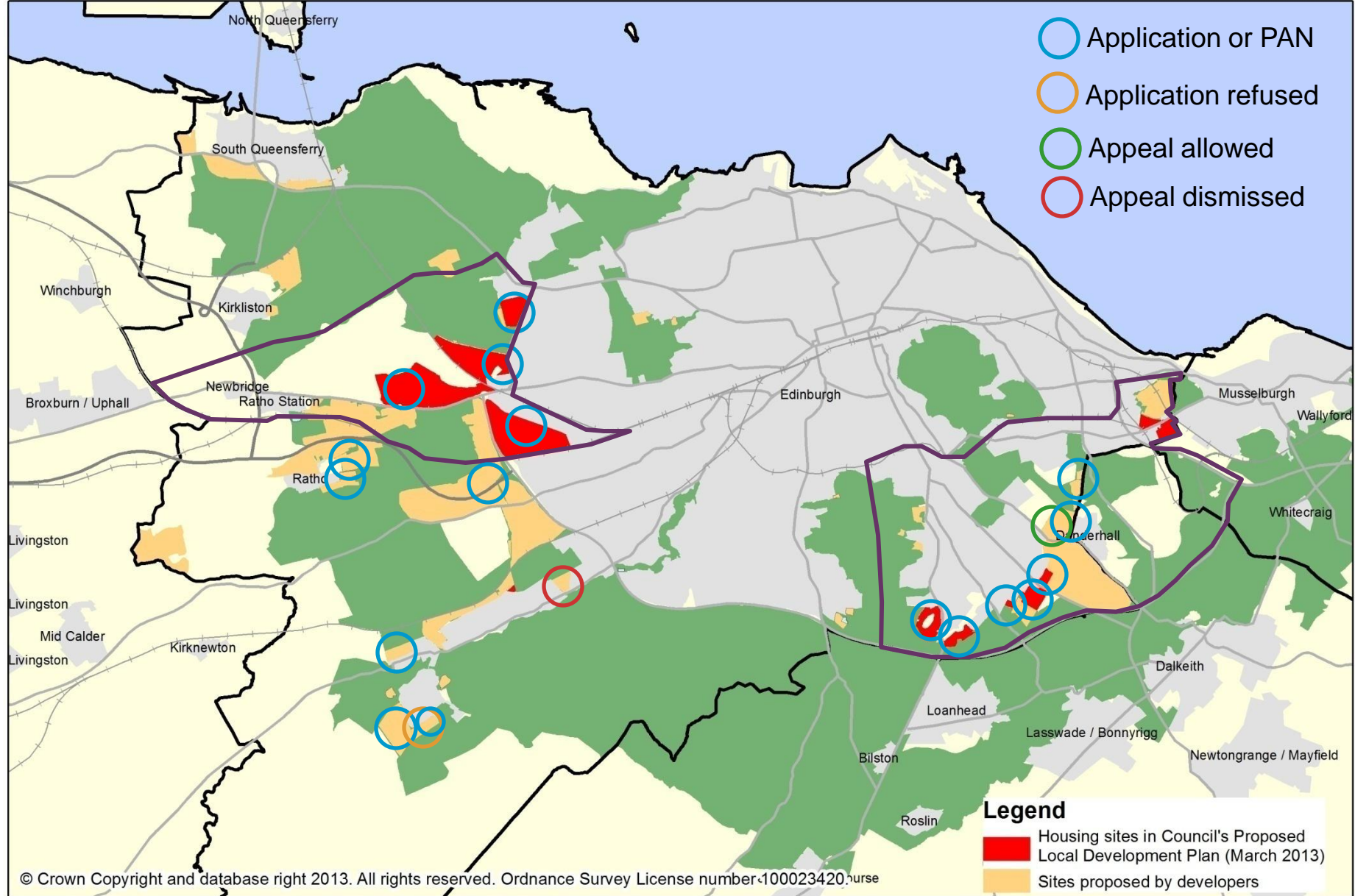
- Check contribution from existing sites and windfall etc (21,810)
- If more housing land needed (7,700) :-
 - Brownfield sites first
 - West Edinburgh and South East Edinburgh next
 - Then Elsewhere in Edinburgh
- Update Transport and Education Appraisals, Action Programme etc

Current Applications for Housing on Greenfield Sites

- Housing applications/PANs (6 on sites supported by Proposed LDP, 10 not)
- Council has to determine these
- If refused, applicant can appeal



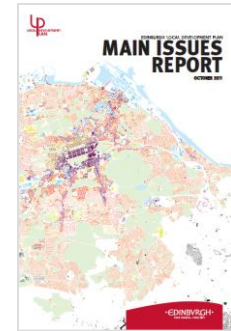
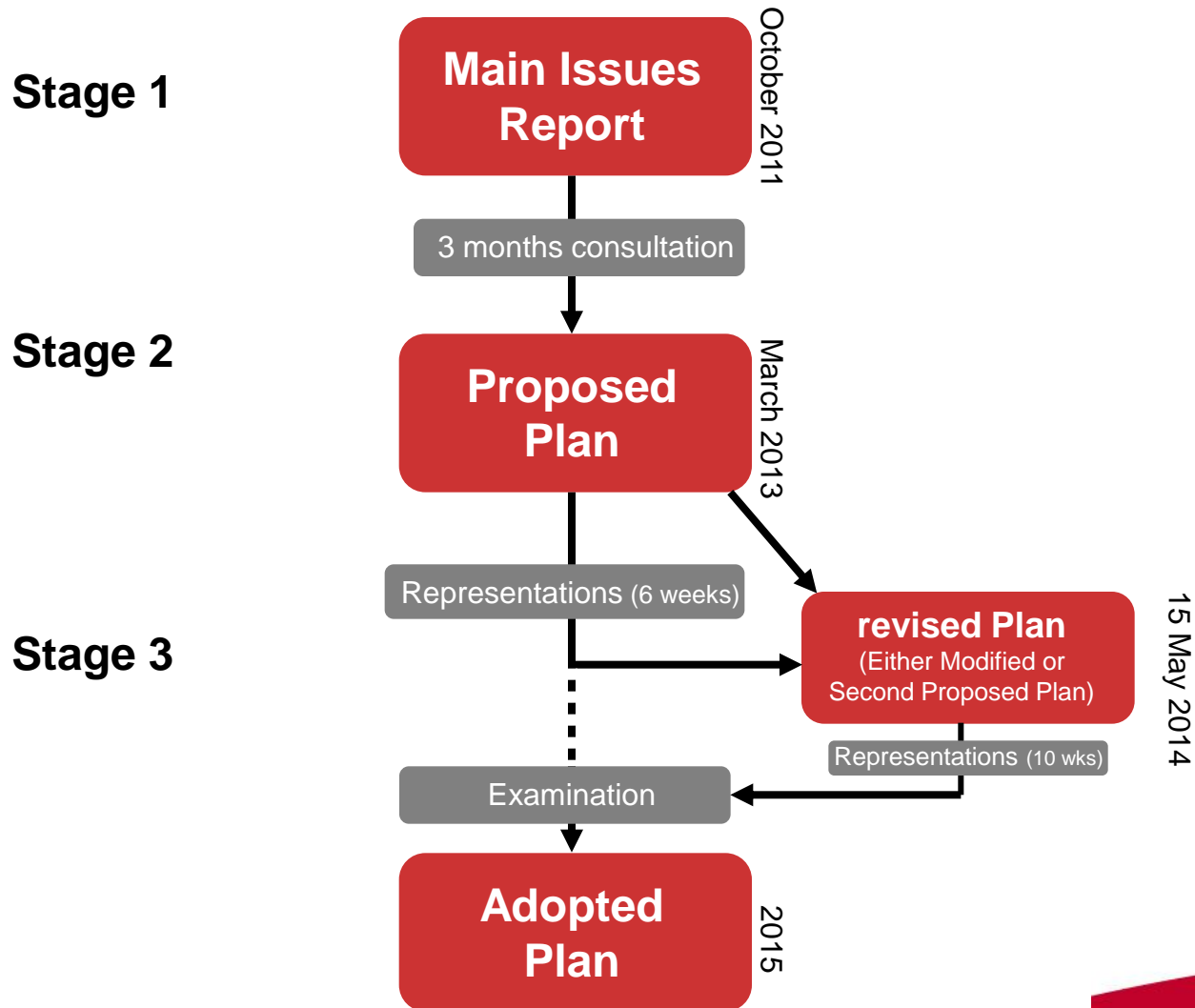
Planning applications and Proposals of Application Notice — last updated January 2014



Other issues raised in Representations

- Leith Waterfront
 - Less housing / more open space
 - Less housing / more industry & docks land
 - More housing / less industry
 - More retail at Ocean Terminal
- John Lewis depot in Bonnington

LDP Process



Next Stage in LDP Process

- Planning Committee – 15 May. Papers available from **9 May**.
- New Development Plan Scheme
- Publication of Plan and Supporting Documents
- Guidance on how to make reps
- 10 week representation period – indicative dates 27 June to **5 Sept**

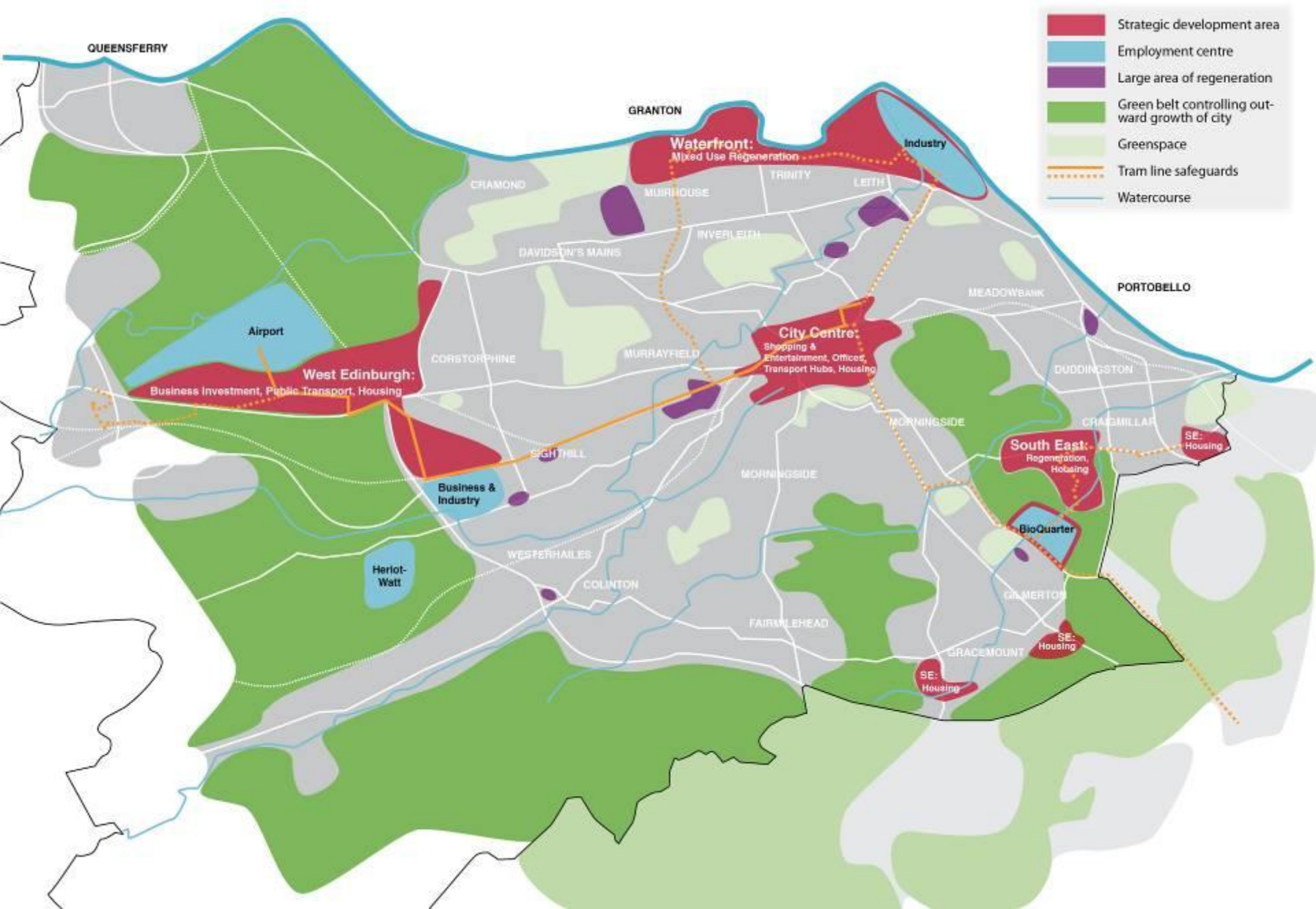
Assisting Community Councils

- Email notification when Committee papers available
- Summary Paper for each Neighbourhood Partnership Area
- Paper copy of Documents
- Paper and electronic copies of Rep Forms and guidance notes
- Contact point for further information
- Anything else?

Further information

- www.edinburgh.gov.uk/localdevelopmentplan
- Email irene.beautyman@edinburgh.gov.uk

Spatial Strategy Summary



Development Principles – Leith Waterfront

